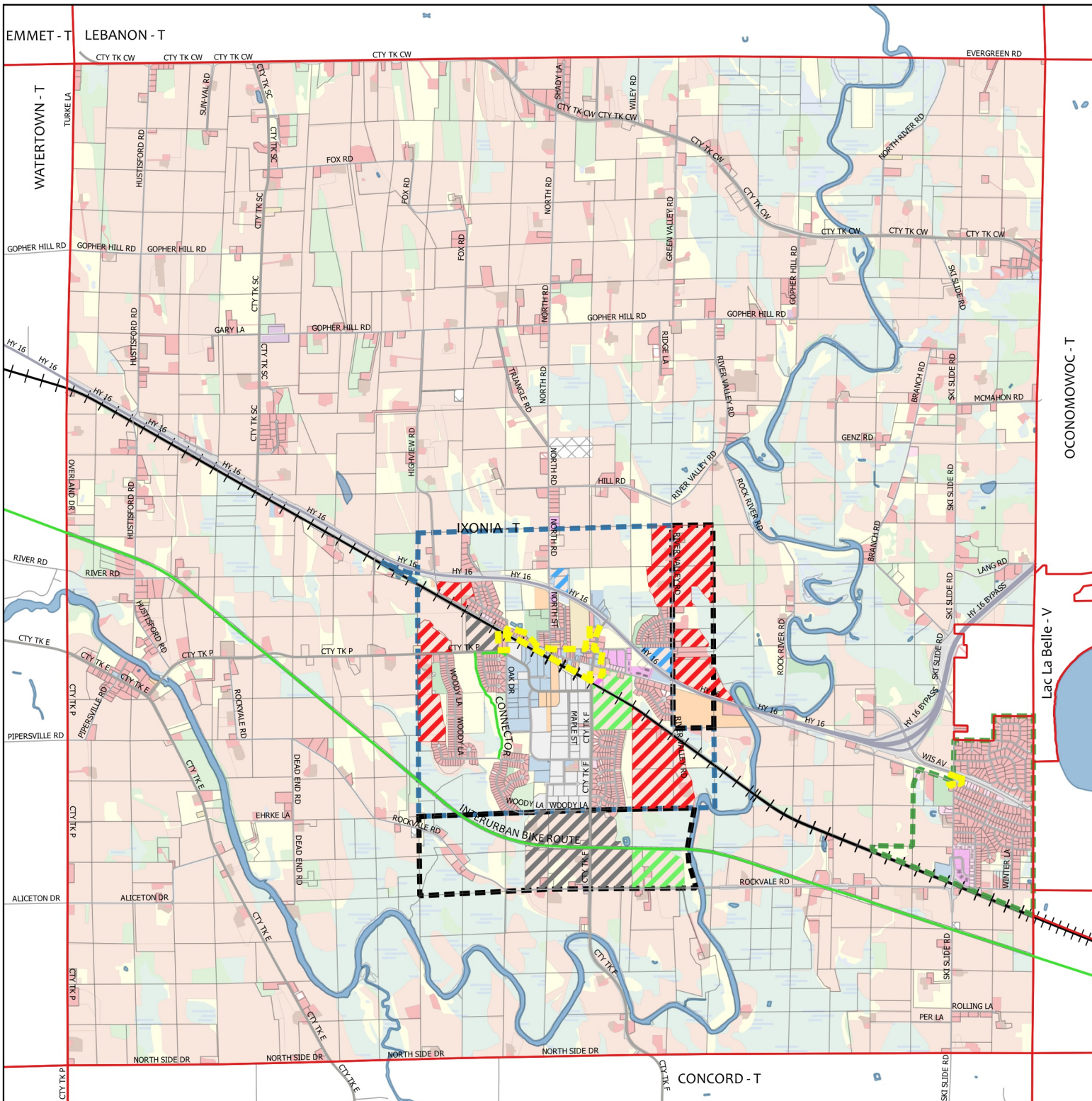


# Map 16

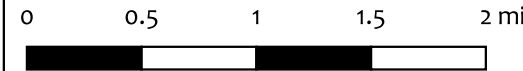
## Town of Ixonia Planned Land Use

### Legend

-  Municipal Borders
- Sanitary Districts**
  -  Sanitary District No. 1
  -  Sanitary District No. 2 (Oconomowoc Service Area)
  -  Future Expansion Area
- Planned Land Use**
  -  Residential
  -  Mixed Use (Res./Bus.)
  -  Business
  -  Industrial
  -  Municipal Use
  -  Infill/Redevelopment



**TRILOGY**  
CONSULTING, LLC  
MUNICIPAL & UTILITY ADVISORS



Sources: WI State Cartographer's Office, Jefferson County, Town of Ixonia, Trilogy Consulting, LLC