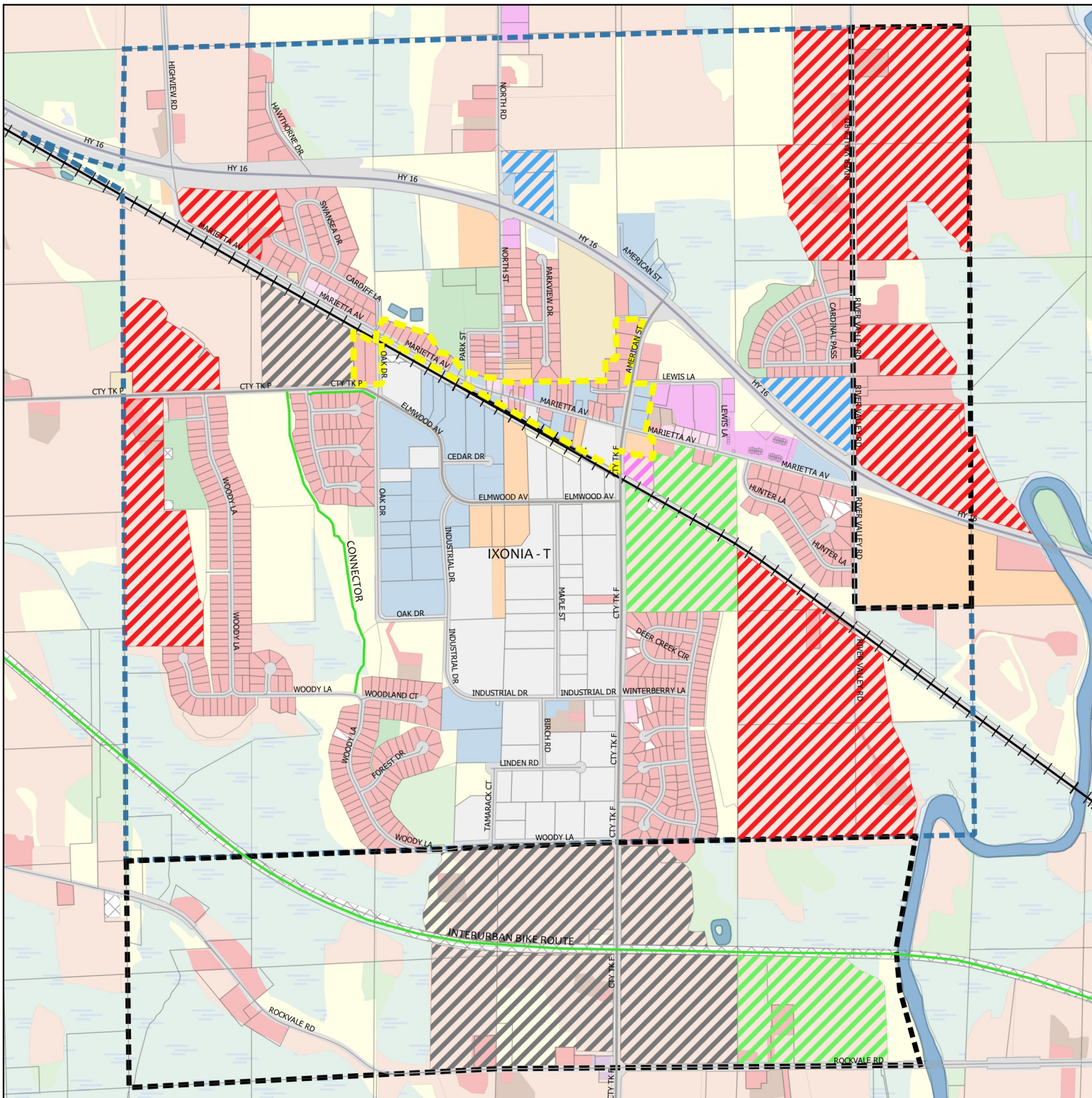


Map 15

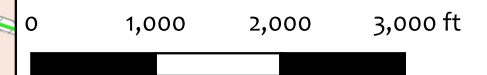
Town of Ixonia Planned Land Use Village Hamlet

Legend

-  Municipal Borders
- Sanitary Districts**
-  Sanitary District No. 1
-  Future Expansion Area
- Planned Land Use**
-  Residential
-  Mixed Use/Residential
-  Business
-  Industrial
-  Municipal Use
-  Infill/Redevelopment



TRILOGY
CONSULTING, LLC
MUNICIPAL & UTILITY ADVISORS



Sources: WI State Cartographer's Office, Jefferson County, Town of Ixonia, Trilogy Consulting, LLC